

1st FUSE (GI) Data Analysis Workshop

Event Bursts

Alex Fullerton
awf@pha.jhu.edu

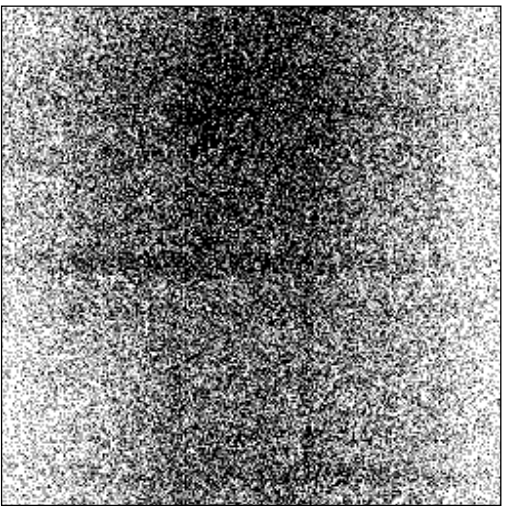
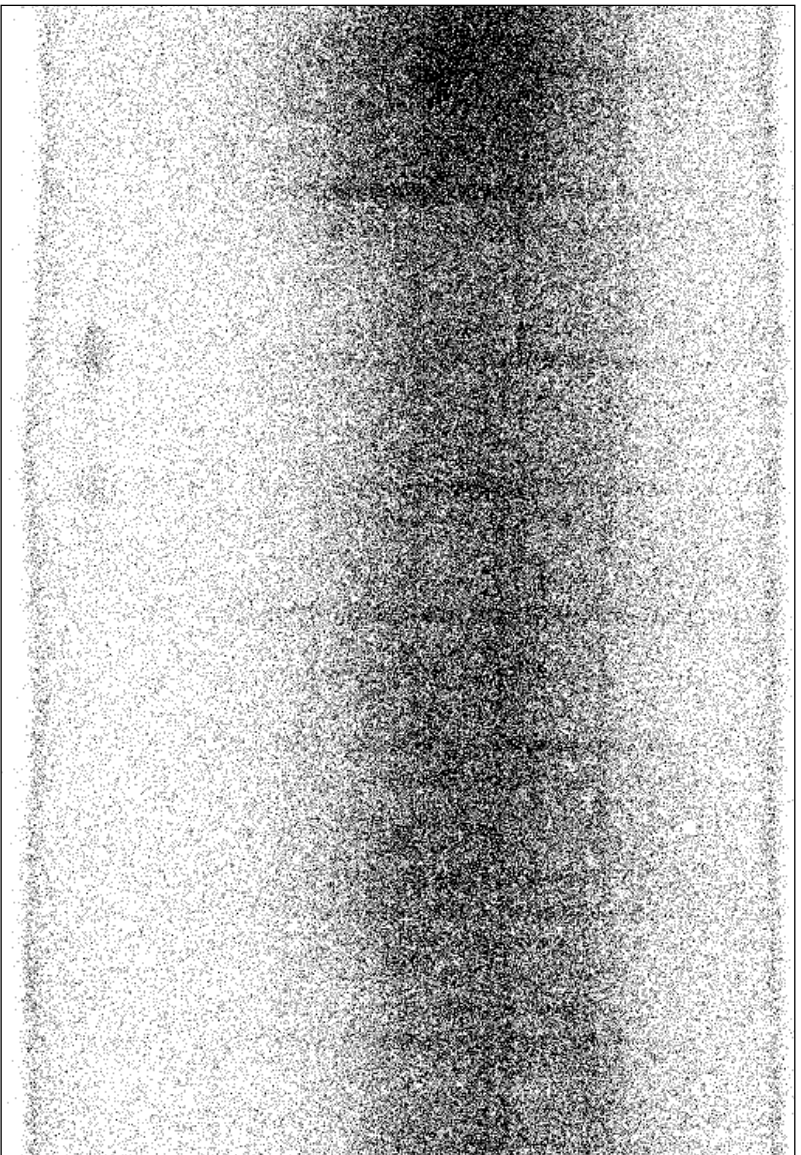
1. Characterizing the Phenomenon

- Orbital circumstances
- Distribution of counts on a detector segment
- Possible causes

2. Living with Event Bursts

- recognizing them
 - in TTAG data
 - in HIST data
- quick & dirty removal techniques (for TTAG data)
- mitigation in the `calfuse` pipeline
 - `cf_ttag_burstbgone`

12050301001 1attagfat_scrn.fit



Targname = DET-BKGND-2
1999-08-14 04:53:48
Detector = 1A
Aperture = HIRS

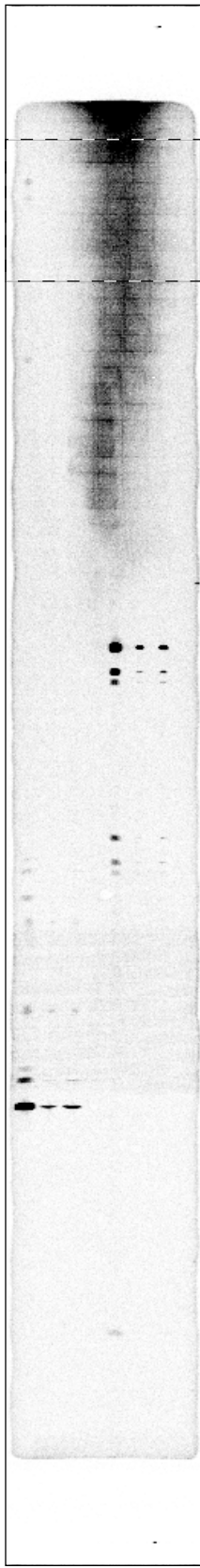
1412:2900 0:1022

0.00000



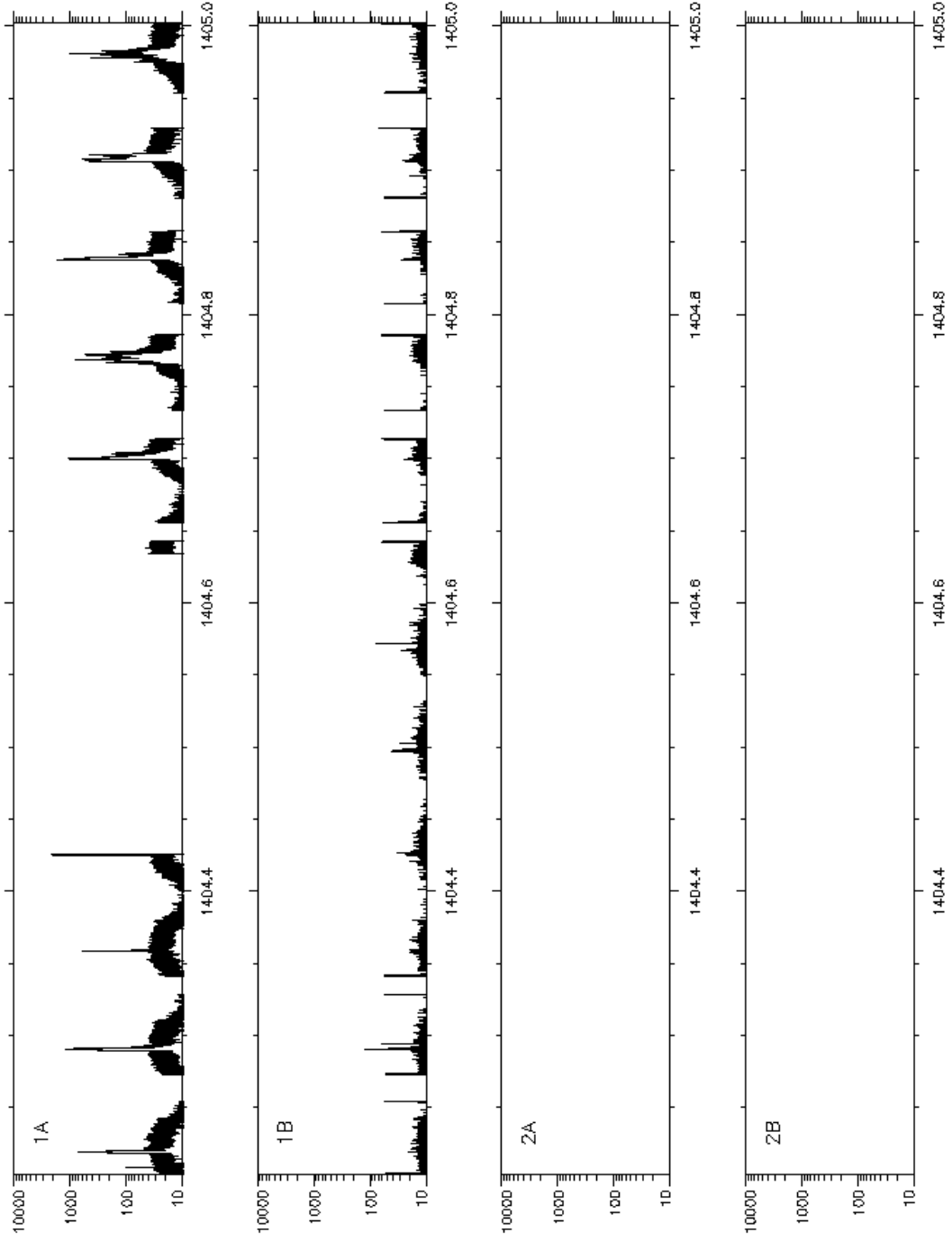
3.00000

Linear Display



Global Count Rates vs. Time

I2050301001-008

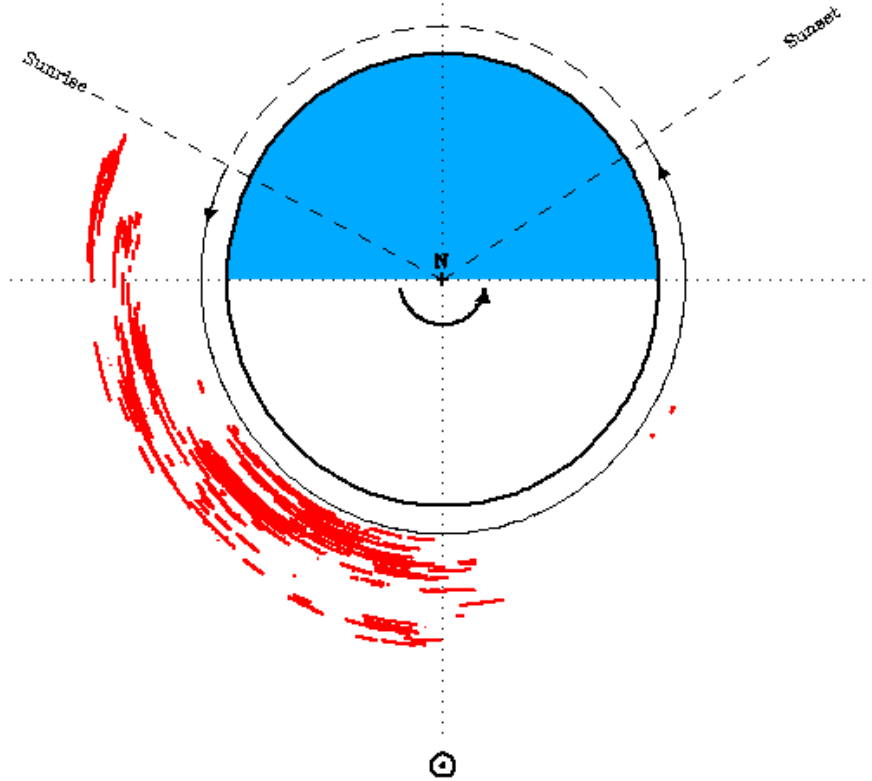


Count Rate [Hz]

MJD - 50000.0

Location and Duration of Bursts wrt Orbital Noon

Detector Segment: 1A
Number of bursts: 216
MJD of first burst: 51404.218
MJD of last burst: 51458.928

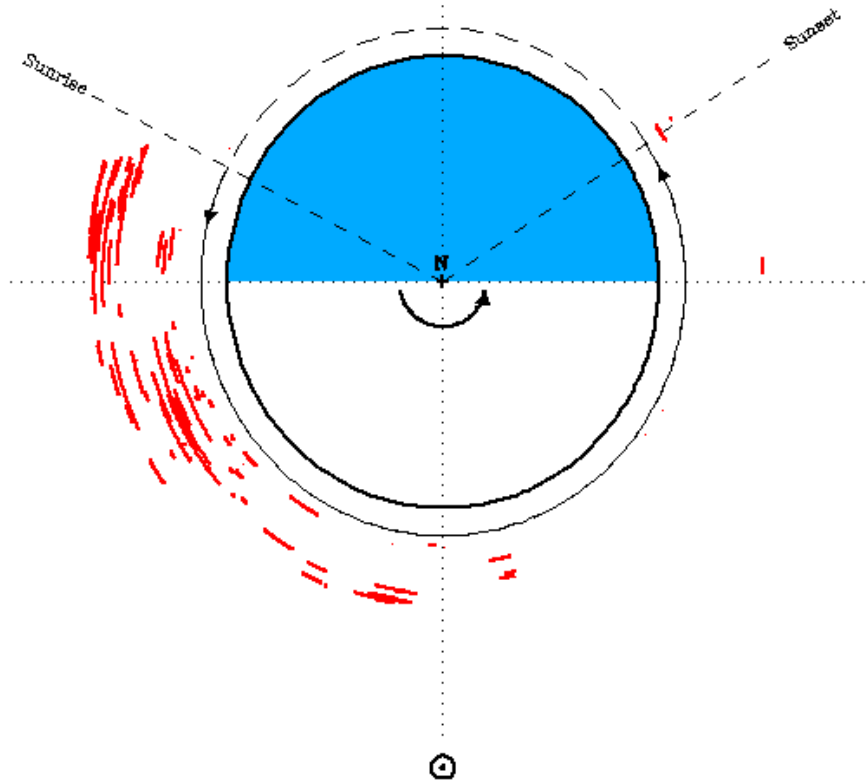


awf@beals

Tue Oct 12 16:39:14

Location and Duration of Bursts wrt Orbital Noon

Detector Segment: 1B
Number of bursts: 93
MJD of first burst: 51405.101
MJD of last burst: 51458.928

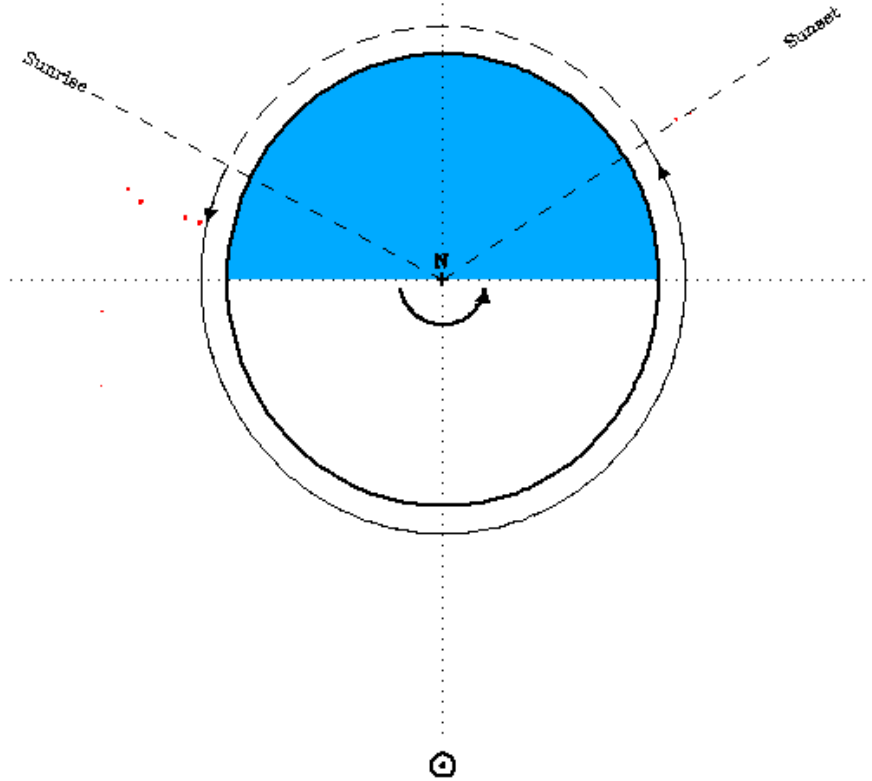


awf@beals

Tue Oct 12 16:59:15

Location and Duration of Bursts wrt Orbital Noon

Detector Segment: 2A
Number of bursts: 8
MJD of first burst: 51424.967
MJD of last burst: 51444.070

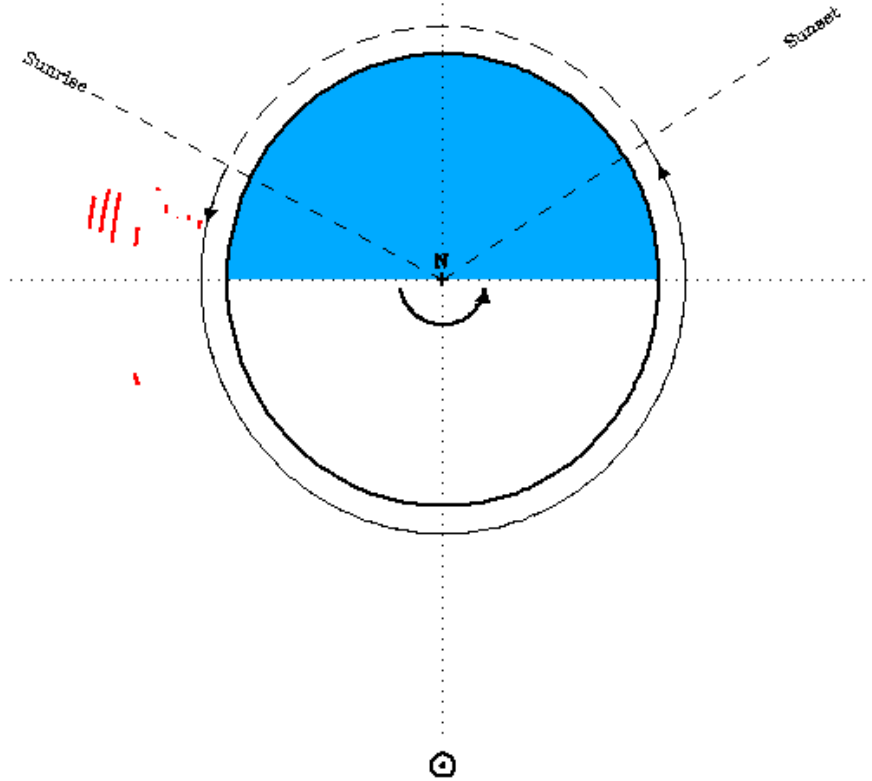


awf@beals

Tue Oct 12 16:39:17

Location and Duration of Bursts wrt Orbital Noon

Detector Segment: 2B
Number of bursts: 10
MJD of first burst: 51424.967
MJD of last burst: 51457.887



awf@beals

Tue Oct 12 16:59:18

21.7652 

53.9844 

65.6837 

74.8541 

83.5598 

86.5741 

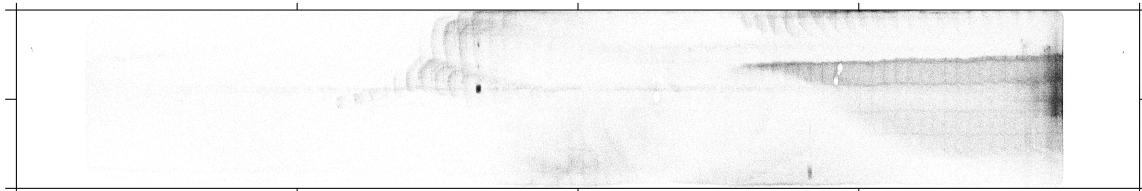
87.1024 

90.5390 

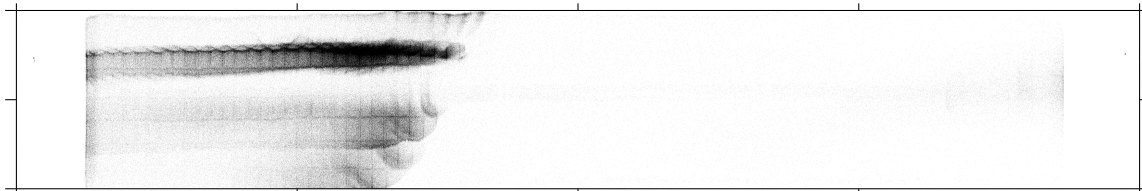
96.0606 

102.012 

Seg 1A



Seg 1B



0

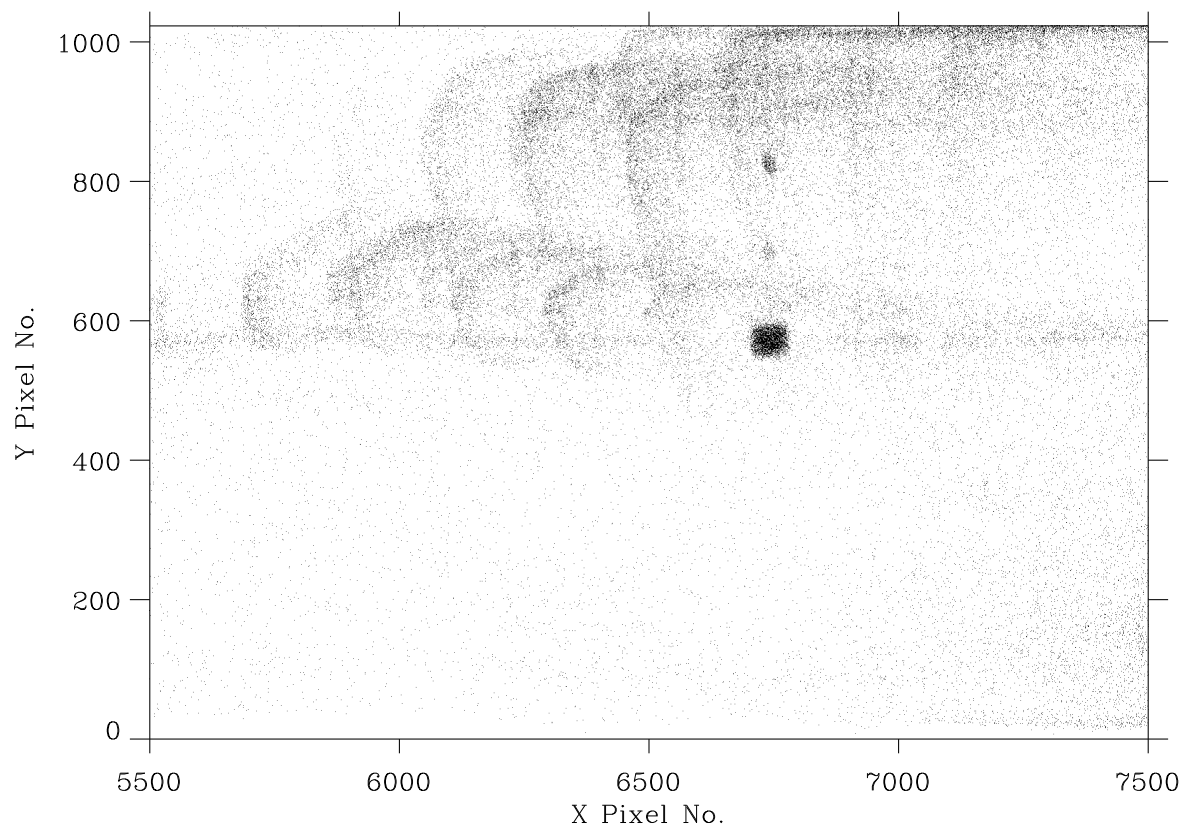
4095

8191

12287

16383

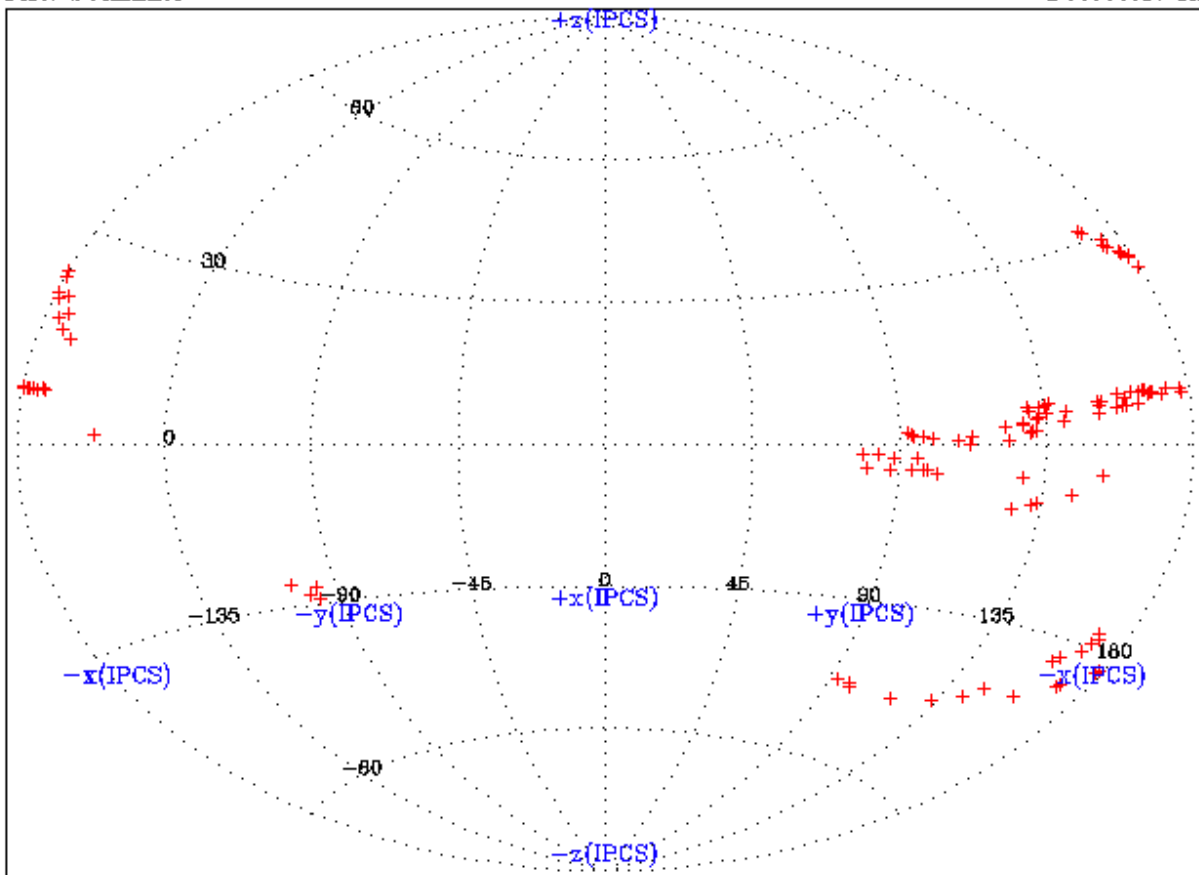
X Pixel No.



Position of Ram at Mid-Point of Bursts

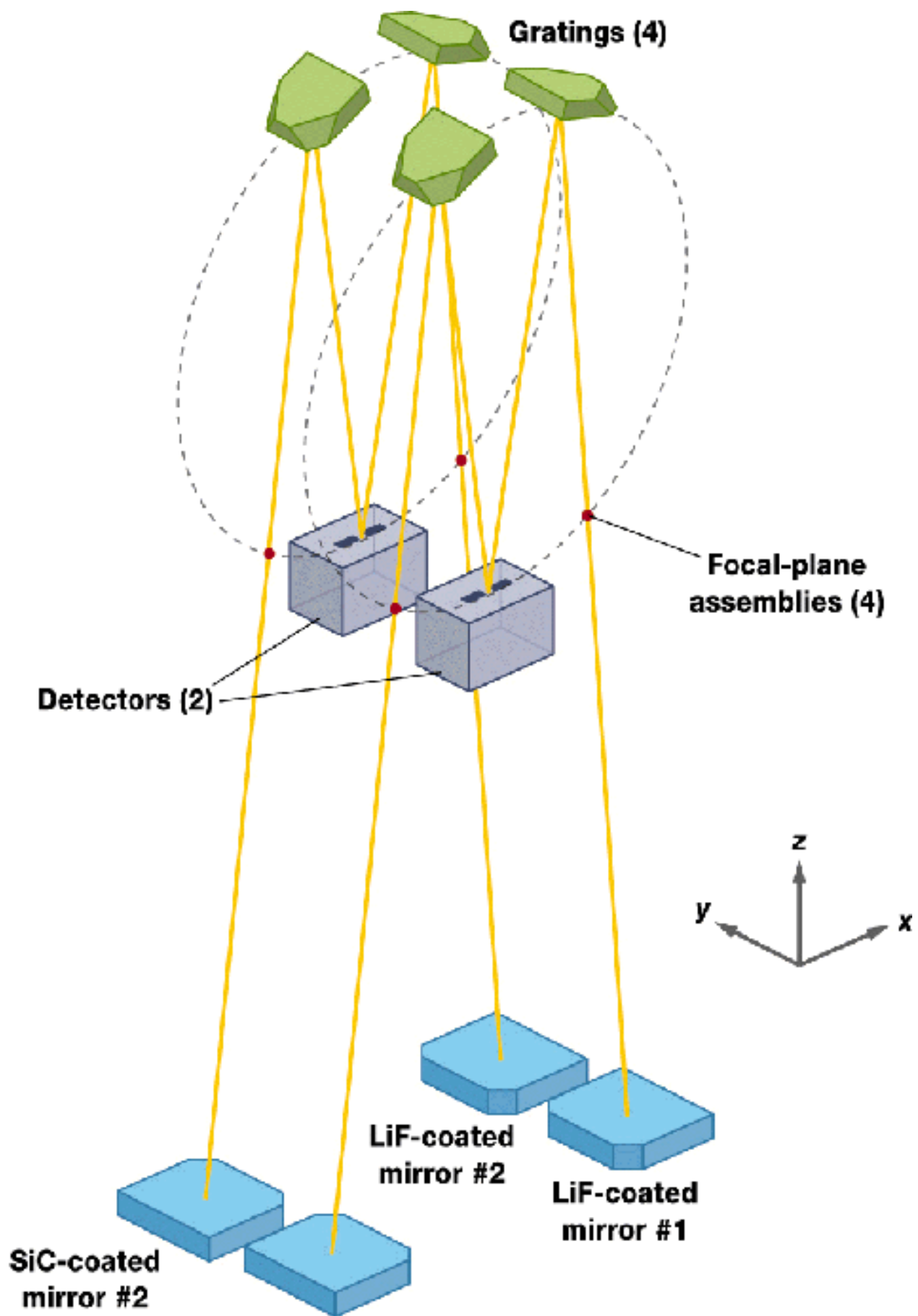
File: SUMMARY

Detector: 1A



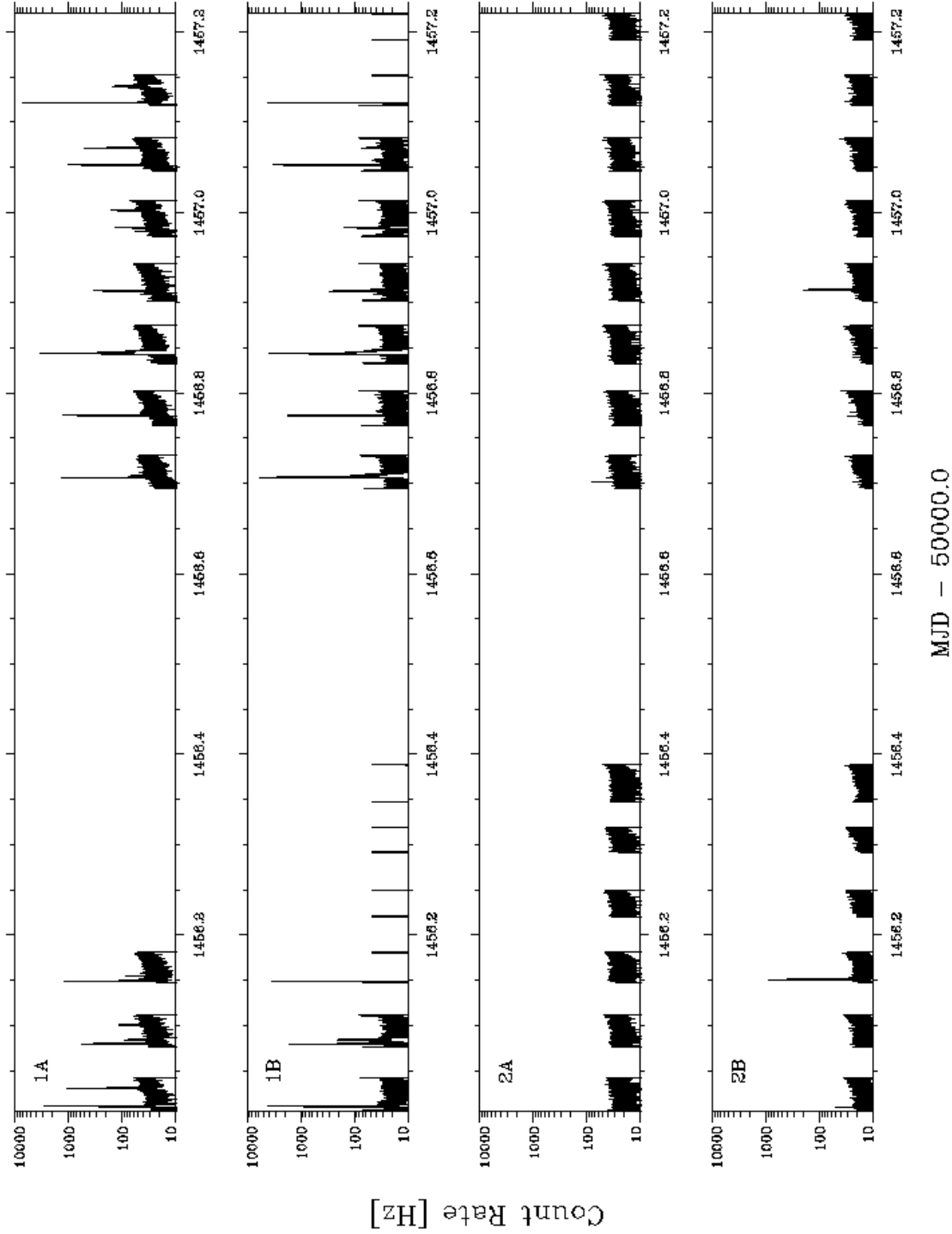
awf@beals

Mon Nov 22 09:23:01 1999



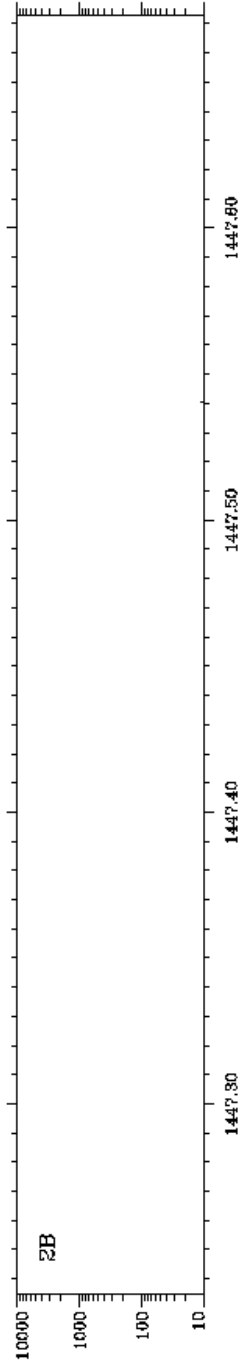
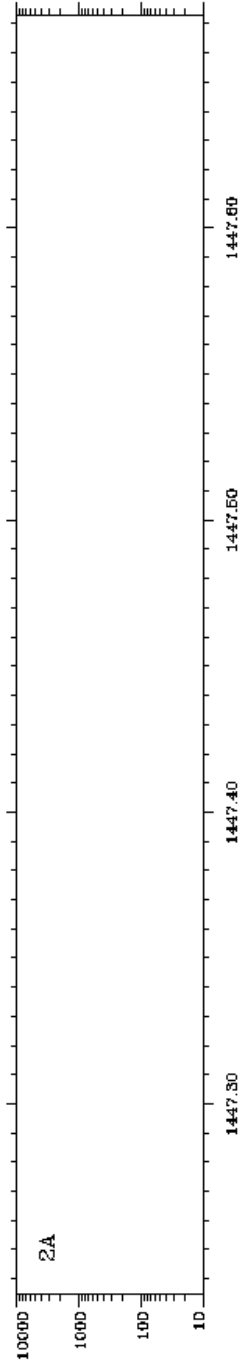
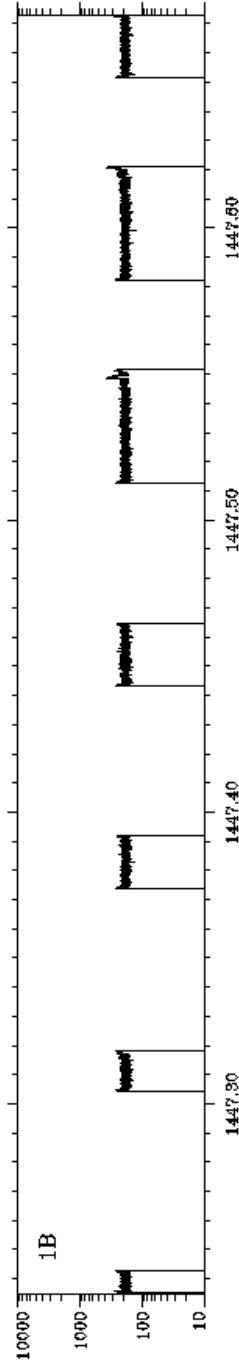
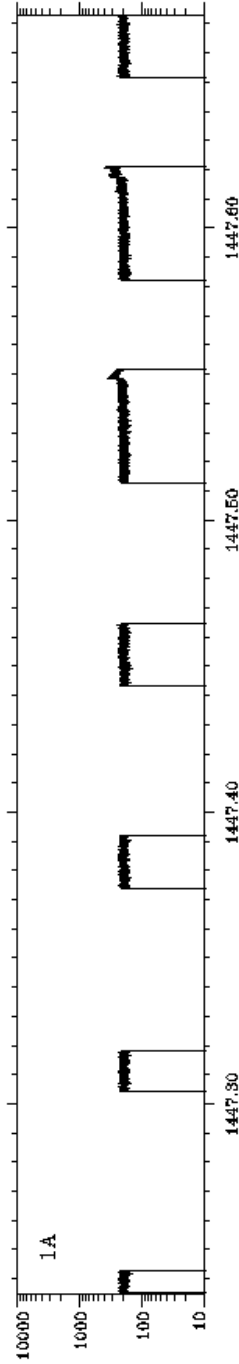
Global Count Rates vs. Time

P1011901001-018



Global Count Rates vs. Time

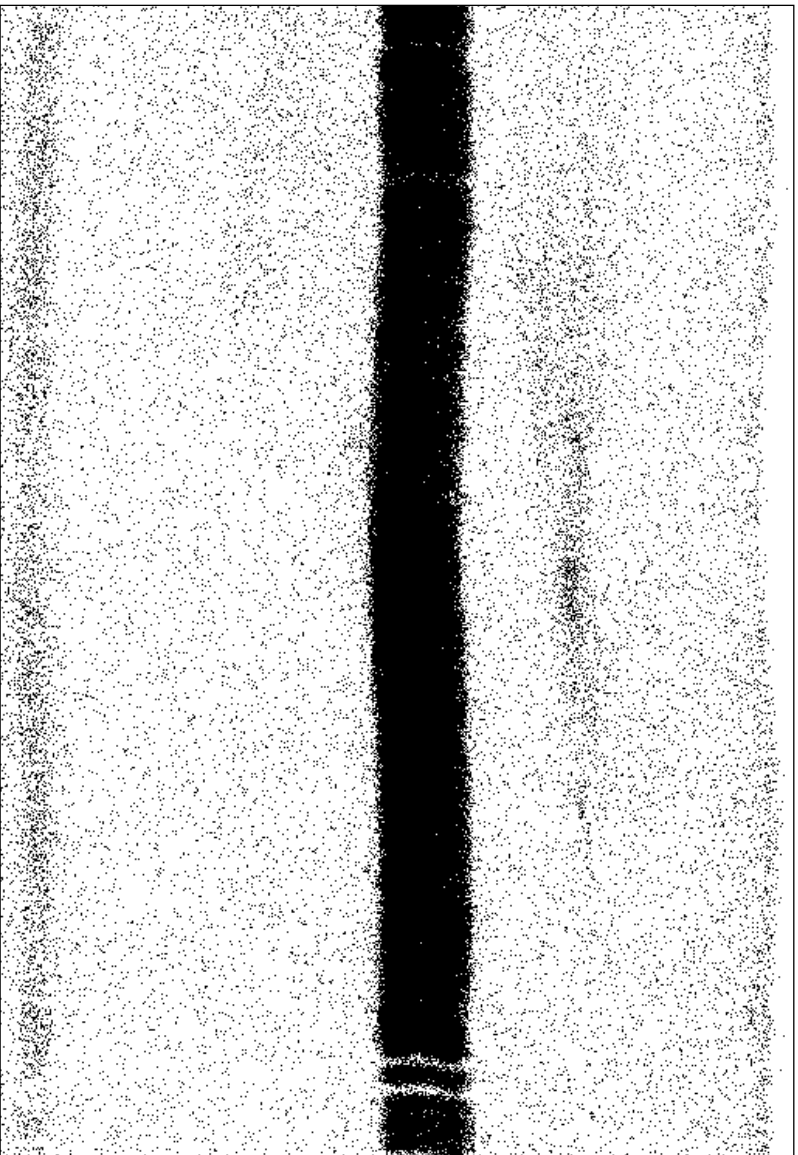
X0200101001-007



Count Rate [Hz]

MJD - 50000.0

X02001010011bttagfcal_scrn.fit



700:802 700:802 zoom = 5
Targname = SK-67D111
1999-09-26 05:38:47
Detector = 1B
Aperture = MDRS

Linear Display

